

PARENTS' GUIDE



0114 251 2501 | WWW.SCHOOLTRENDS.CO.UK













KEEP LOOKING BETTER FOR LONGER

School Trends provides you with World Class schoolwear. To keep your uniform looking it's best for longer please refer to the wash care label.

General Garment Care Instructions

1. Always refer to the garment care instructions printed on the label inside your garment.
2. Always ensure you sort your garments into like for like colours and fabrics for washing.
3. Be careful not to overload your washing machine.
4. Turn garments inside out prior to machine washing.
5. Always wash dark colours separately.
6. For whites we recommend the use of wash care products that are specifically formulated for whites. This ensures your whites stay white.
7. The use of fabric softener is not recommended as it is known to break down fibres in clothing.
8. Stain removers containing optical brightening agents or bleach are not recommended for use on colours or darks.

GUIDE TO OUR WASH CARE SYMBOLS

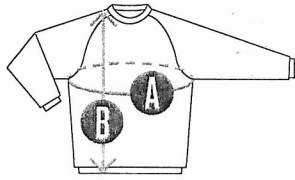
-  Machine wash
-  30° machine wash with maximum agitation and normal spin
-  40° machine wash with maximum agitation and normal spin
-  40° machine wash with medium agitation and short spin
-  50° machine wash with medium agitation and short spin
-  Do not use Chlorine bleach
-  Cool tumble dry
-  Do not tumble dry
-  Easy Iron
-  Cool Iron
-  Warm Iron
-  Non iron

School Trends have been supplying school uniform for over 28 years. Our aim is to deliver quality clothing that offers excellent value for money. This parents' guide is designed to help you select the correct size uniform for your child and provide basic wash care instructions.

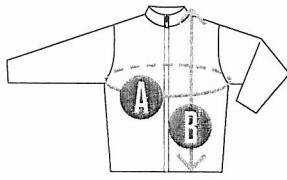
HOW TO MEASURE

You can either...

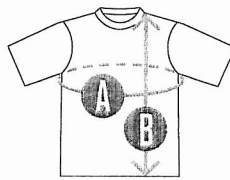
Take a tape measure and measure in inches all around your child's chest or waist and refer to 1) To fit child's chest/waist. Or measure an item of clothing that your child already has in centimetres and follow the below diagrams referring to the A and B measurements.



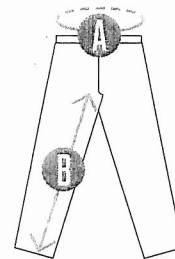
Sweatshirts, Sweatcardis, Classic Hoodie, Classic Zoodie, Knitwear, Long Sleeved Polo Shirt, Rugby Shirt & Leavers/Events Zoodie



Eco Blazer, Blazer, Reversible Coat, Fleece, Lightweight, Parka & Softshell Jacket, Tracksuit Top & All Weather Suit Jacket



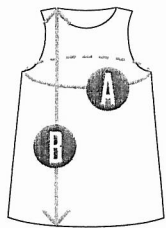
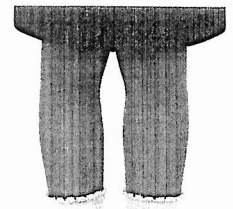
Polo Shirts & Classic T-Shirt



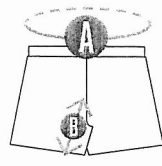
Relaxed Joggers, Tracksuit Bottoms, Waterproof Trousers & All Weather Suit Trousers



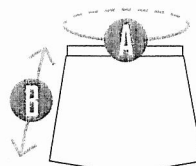
MEASURE CLOTHING THAT YOUR CHILD ALREADY HAS & COMPARE IT USING A & B



Pinafores & Gingham Dresses



Shadow Stripe, Fitted & Poly-Cotton Shorts



PE Skort

Please note: Finished length measurements for tops, dresses and jackets are taken from the shoulder neck point to hem including rib trims if applicable. However Blazers are measured from the centre back. Please allow for 5% commercial tolerance.

POLY-COTTON SHORTS

Approx. Age (years)	2/3	3/4	5/6	7/8	8/9	9/10	11/12	13	5
1) To fit child's waist (inches)	18	20	22	24	26	28	30	32	34/36
A Waist Relaxed (cm)	38	40	46	50	54	58	62	66	72
B Inside Leg (cm)	7	7.5	8	9	9	9.5	9.5	10	10

SHADOW STRIPE SHORTS

Approx. Age (years)	2/4	4/7	7/10	10/13	5
1) To fit child's waist (inches)	18/20	22/24	26/28	30/32	34/36
A Waist Relaxed (cm)	42	46	50	54	58
B Inside Leg (cm)	6	8	9	10	11

FITTED SHORTS

Approx. Age (years)	4/5	6/7	8/9	11/12
A Waist Relaxed (cm)	46	48	50	52
B Inside Leg (cm)	13	14	15	16

PE SKORT

Approx. Age (years)	5/6	7/8	9/10	11/12
A Waist Relaxed (cm)	48	52	56	60
B Inside Leg (cm)	28	29	30	31

TRACKSUIT TOP

Approx. Age (years)	5/6	7/8	9/10	11/12	13
1) To fit child's chest (inches)	26	28	30	32	34/36
A Garment Chest (cm)	94	100	106	112	118
B Garment Length (cm)	50	55	60	65	70

TRACKSUIT BOTTOMS

Approx. Age (years)	5/6	7/8	9/10	11/12	13	XS	S
1) To fit child's waist (inches)	20/22	22/24	24/26	26/28	28/30	30/32	32/34
A Waist Relaxed (cm)	51	53	56	59	63	67	73
B Finished Length (cm)	47	52	57.5	63	68	73	77.5

ECO BLAZER - GIRLS

1) To fit child's chest (inches)	22	24	26	28	30	32	34
A Garment Chest (cm)	56	61	66	71	76	81.5	86.5
B Garment Length (cm)	45	48	52.5	57.5	62	65	67

ECO BLAZER - BOYS

1) To fit child's chest (inches)	22	24	26	28	30	32	34
A Garment Chest (cm)	56	61	66	71	76	81.5	86.5
B Garment Length (cm)	45	49	54	59	64	69	73

BLAZER - GIRLS

1) To fit child's chest (inches)	22	24	26	28	30	32	34
A Garment Chest (cm)	71.5	76.5	81.5	86.5	91.5	96.5	101.5
B Garment Length (cm)	43.5	48.5	53.5	58.5	61	63.5	68.5

BLAZER - BOYS

1) To fit child's chest (inches)	22	24	26	28	30	32	34
A Garment Chest (cm)	71.5	76.5	81.5	86.5	92	96.5	101.5
B Garment Length (cm)	43	48	53.5	58.5	62.5	66	71

LEAVERS & EVENTS ZOODIE

Approx. Age (years)	5/6	7/8	9/11	12/13	S
1) To fit child's chest (inches)	28	30	32	34	36
A Garment Chest (cm)	82	86	92	98	102
B Garment Length (cm)	48	52	57	62	67

Always good quality from School Trends, garments wash and wear very well!

Jayne Coulton, Preston

GARMENT SPECIFICATION

CLASSIC SWEATSHIRT, ESSENTIAL CREW & V-NECK SWEATSHIRTS, CLASSIC HOODIE & CLASSIC ZODDIE

Approx. Age (years)	3/4*	4/5	5/6	7/8	9/10	11/12	S
1) To fit child's chest (inches)	22	24	26	28	30	32	34
① Garment Chest (cm)	66	71	76	81	86	92	96
② Garment Length (cm)	42	44.5	47	49.5	52	60	63.5

*Please note 3/4years is not available in V-Neck Sweatshirt

CLASSIC SWEATCARDI & ESSENTIAL SWEATCARDI

Approx. Age (years)	3/4	4/5	5/6	7/8	9/10	11/12	S
1) To fit child's chest (inches)	22	24	26	28	30	32	34
① Garment Chest (cm)	66	71	76	81	86	92	96
② Garment Length (cm)	42	44.5	47	49.5	52	60	65

CLASSIC POLO SHIRT, ESSENTIAL POLO SHIRT & LONG SLEEVED POLO SHIRT

Approx. Age (years)	3*	4/5	5/6	7/8	9/10	11/12	S
1) To fit child's chest (inches)	18/20	22/24	26	28	30	32	34
① Garment Chest (cm)	62	69	74	79	84	89	94
② Garment Length (cm)	43	47	50	53.5	57	61	66

*Please note 3years is not available in Long Sleeved Polo Shirt

TIPPED POLO SHIRT

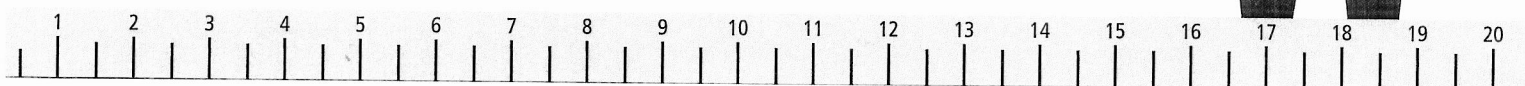
Approx. Age (years)	2/3	3/4	5/6	7/8	9/10	11/12	13	14/15	S
① Garment Chest (cm)	66	70	74	78	84	90	96	102	107
② Garment Length (cm)	44	46	49	53	58	61	63.5	66	71

COURTELLE CLASSIC KNITWEAR

Approx. Age (years)	4/5	5/6	7/8	9/10	11/12	13
1) To fit child's chest (inches)	24	26	28	30	32	34
① Garment Chest (cm)	66	70	76	80	86	92
② Garment Length (cm)	44	47	52	57	61	65

PERFORMA™ KNITWEAR

Approx. Age (years)	3/4	5/6	7/8	9/10	11/12	13	S
① Garment Chest (cm)	65	70	75	80	86	90	96
② Garment Length (cm)	44	48	52	56	58	60	62



BUTTON FRONTED GINGHAM DRESS

Approx. Age (years)	3/4	4/5	5/6	6/7	7/8	8/9	9/10	10/11	11/12	12/13
① Garment Chest (cm)	62	65	68	71	74	77.6	81	84.5	88	92
② Garment Length (cm)	54.5	58.5	62.5	66.5	70.5	75	80	84	88	92

ZIP FRONTED GINGHAM DRESS

Approx. Age (years)	3/4	4/5	5/6	6/7	7/8	8/9	9/10
① Garment Chest (cm)	62	64	66	68	70	73	76
② Garment Length (cm)	53.5	56	61	66	71.5	76.5	81.5

PINAFORE DRESS

Approx. Age (years)	4	5	6	7	8	9	10
① Garment Chest (cm)	69	70.5	72	74	76	78	82
② Garment Length (cm)	60	63	66	69	72	76	80

CLASSIC T-SHIRT

Approx. Age (years)	4/5	5/6	7/8	9/10	11/12	S
1) To fit child's chest (inches)	22/24	26	28	30	32	34
① Garment Chest (cm)	69	77	82	88	92	99
② Garment Length (cm)	49	52	55.5	59	62	68

RELAXED JOGGERS

Approx. Age (years)	2/3	3/4	5/6	7/8	9/10	11/12	13/14
① Waist Relaxed (cm)	42	46	50	54	58	62	66
② Inside Leg (cm)	33.5	38	45	54	61	68	74

ALL WEATHER SUIT JACKET

Approx. Age (years)	3/4	5/6	7/8	9/10	11/12	S
① Garment Chest (cm)	86	91	96	101	106	116
② Garment Length (cm)	53	60	62	64	66	74

ALL WEATHER SUIT TROUSERS & WATERPROOF TROUSERS

Approx. Age (years)	3/4	5/6	7/8	9/10	11/12	S
① Waist Relaxed (cm)	42	45	48	51	53	92
② Inside Leg (cm)	46	50	54	58	60	73

WHY NOT
MEASURE
YOUR CHILD'S
CLOTHING?
USE A & B
TO COMPARE



Good quality garments, always excellent service for over 10 years!

Sarah Williams, Skelmersdale

FLEECE JACKET

Approx. Age (years)	3/4	5/6	7/8	9/10	11/12	13/14
① Garment Chest (cm)	74	80	86	92	98	104
② Garment Length (cm)	48	52	57	60	64	68

LIGHTWEIGHT JACKET & ULTIMATE REVERSIBLE COAT

Approx. Age (years)	3/4	5/6	7/8	9/10	11/12	13/14
① Garment Chest (cm)	85	91	97	103	109	115
② Garment Length (cm)	52	56	60	64	68	72

PARKA COAT

Approx. Age (years)	3/4	5/6	7/8	9/10	11/12	13/14
① Garment Chest (cm)	82	94	98	104	108	114
② Garment Length (cm)	53	60	62	64	66	68

SOFTSHELL JACKET

Approx. Age (years)	3/4	5/6	7/8	9/10	11/12	13/14
① Garment Chest (cm)	65	71	77	83	89	96
② Garment Length (cm)	44	48	52	56	60	64

